

PARTNERS

Continuous Intelligence. Continuous Visibility

Virtualize Your Supply Chain



Cloudleaf enables the next generation of intelligent supply chains. We deliver continuous visibility and actionable insights across the supply chain helping enterprises make the right decisions in real-time, to increase revenues, avoid disruptions, improve customer satisfaction and increase sustainability.

The pharmaceutical industry loses over \$35B due to failures in temperature-controlled logistics. The Cloudleaf Cold Chain solution, hosted on Microsoft Azure, provides continuous visibility into material loss/damage, real-time location and condition (temperature, light, humidity, vibration, etc), tracking and predictive ETAs. Cloudleaf's predictive capabilities, product tracking and alerts enables preventive action and the safe delivery of medicine and critical supplies.

Cloudleaf customers have achieved the following benefits:

- A global manufacturer saved millions of dollars in asset write-downs by gaining **100 percent real-time visibility of high-value assets.**
- One of the largest bio pharmaceutical companies gained **100 percent visibility into real-time location and inventory tracking** of plasma containers resulting in annual savings of \$10-15M dollars and the elimination FDA infractions.
- A technically advanced developer improved workflow and material losses by improving supply chain practices that resulted in **30 percent lower operating costs**, millions of dollars of energy savings and better-quality products.

BENEFITS

- Increase revenue recognition through reduced shipment/storage losses and increased on-time delivery
- Greater compliance through availability of **real time audit** records and quality certificates for regulatory authorities
- Greater customer satisfaction through on-time and certified **authentic** product delivery and consistent quality

RESULTS

- Eliminate supply chain blind spots
- Anticipate and avoid disruptions
- Eliminate waste
- Reduce operational and working capital costs
- Monitor and measure success instantly
- Seamlessly connect and communicate with all stakeholders
- Quickly respond to customers' needs
- Enhance sustainability

Achieve up to 100% Visibility

100% Improvement in ETA, excursions

“The Cloudleaf cloud-based solution is game-changing for Life Sciences operations leaders and the management of end-to-end product supply. It is akin to having an intelligently talking supply chain with distributed IoT sensors continuously broadcasting and communicating the status and whereabouts of the product being tracked to process and materials management.”

Maria Nieradka Life Sciences Global Operations Executive



Cloudleaf + Azure:

With Microsoft Azure, Cloudleaf's Logistics Intelligence Solution provides continuous visibility into the context, condition, timing and location of material and assets throughout your supply chain. And the ability to access this multidimensional data, in real time, anywhere in the supply chain around the globe.

Benefits Include:

- Diagnostic and predictive insights, in order to understand the current health of supply chain execution, conduct crisis scenario planning, and rectify situations in real-time.
- More complete data insights to optimize inventory, planning and logistics, improve compliance rates, protect product integrity and brand reputation
- Improved collaboration, more informed strategic decisions, operational costs reductions, and increased customer satisfaction.

Hardware and data agnostic

Secure and scalable

Fast and Easy to Deploy

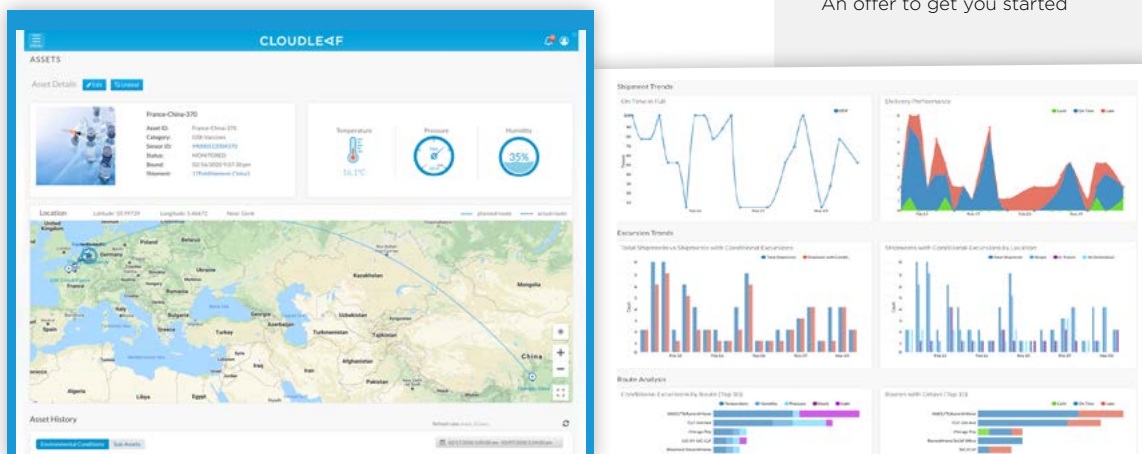
Continuous Visibility. Continuous Intelligence.

OUR PROMISE TO YOU

With Microsoft Azure, Cloudleaf's Logistics Intelligence Solution provides customers with visibility into material loss/damage, real-time location and condition tracking and predictive ETAs, compliance and chain of custody.

We help you find value hidden in your supply chain, gain efficiency and de-risk your supply chain.

An offer to get you started



“ **Supply Chain Visibility:** By building and reinforcing a **single source of truth**, a **digitized supply chain** strengthens capabilities in anticipating risk, achieving **greater visibility** and coordination across the supply chain, and managing issues that arise from growing product complexity. ”

McKinsey March 24, 2020 report on Supply-chain recovery in coronavirus times — plan for now and the future

Why Cloudleaf?

Cloudleaf is different. Our modern, open platform provides unrivaled, continuous visibility and insight into your supply chain. By connecting the physical and digital, we make it possible for you to know where all your critical materials are at every step and stage, all the time. You know their condition and status, including temperature, humidity, vibration and acceleration — and when thresholds for each are out of variance. You have the right insights, at the right time, to proactively assess and respond.

To take the first steps in transforming your supply chain, reach out to **Cloudleaf**.

